

commercial & industrial (C&I) segment & 565 Wp – 580 Wp for utility scale and large C&I customers.

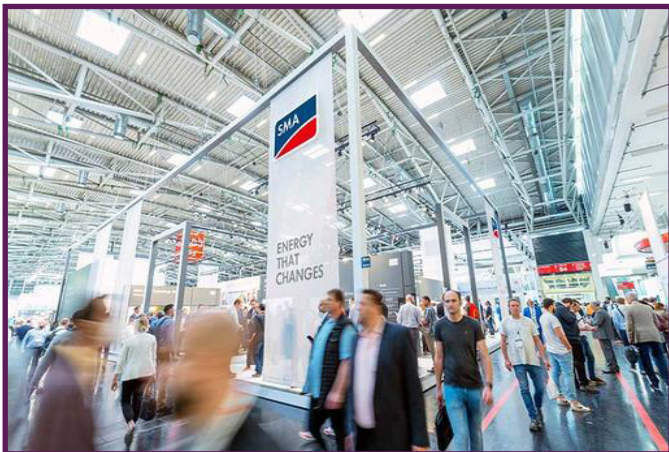
Gautam Solar's 420 Wp – 435 Wp TOPCon solar modules are available in four variants: All Black, Silver Frame, Glass-to-Glass Bifacial and Light Weight Bifacial. Notably, these solar modules have an area under 2 m<sup>2</sup>, in compliance with local requirements.

The All Black Solar Modules incorporate black backsheet and black anodized aluminium alloy frame, in stark contrast to the conventional design with white backsheet and silver anodized aluminium alloy frame.

Glass-to-Glass bifacial modules provide up to 10-30 percent gain from the rear side. Together, N-Type TOPCon and Bifacial Technology can combine to give 37 percent more power. Light weight Bifacial Modules incorporate high quality Transparent Backsheet, which ensures good rear side power while keeping the weight of the module low, thereby preventing handling issues. These feature 108 half-cut cells based on M10 wafer.

Gautam Solar's 565 Wp – 580 Wp Solar Modules are ideal for utility and large C&I projects to help generate more power. These modules feature 144 half-cut cells based on M10 wafer.

### SMA Showcases Solutions for New Energy World



SMA launched a range of new solutions for a future-proof energy supply. The spotlight was on the Sunny Boy Smart Energy - the single-phase hybrid inverter, with a brand-new design, that can be integrated seamlessly into the solution world.

The company's new storage and charging solutions support businesses in successfully tackling the challenges presented by the new energy world. When it comes to large-scale systems, SMA presented innovative grid-forming solutions for dynamic grid support. Another highlight was the SMA container solution for hydrogen production.

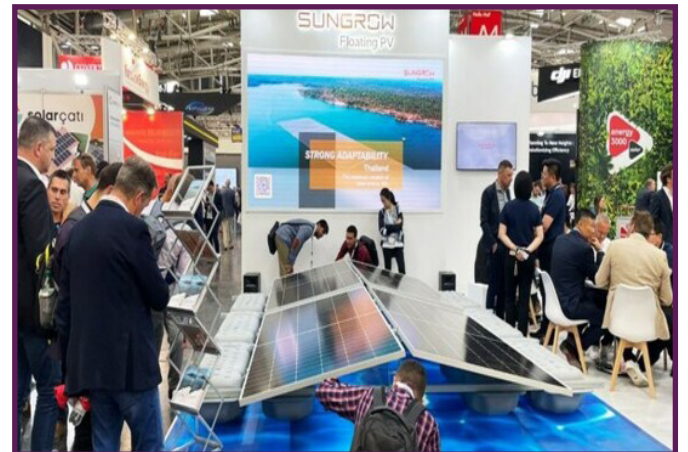
### RenewSys Exhibits High-Performing Large-Format Modules



RenewSys' booth showcased its high-performing large-format modules that are available in 108X, 120X, 144X, and 156X cell configurations with both bi-facial glass-glass and glass-transparent backsheet variants. The company's award-winning encapsulants (EVA, POE & EPE) and backsheets (transparent, white, & black) were also in demand.

The company reconnected with business partners and friends from all corners of the world while forging new relationships and having great conversations.

### Sungrow FPV Unveils New Floating PV System Solution



Sungrow FPV unveiled its latest floating PV system solution during the exhibition in Munich. The Company's exhibits displayed competitive technical innovations for long-term energy supply and aim to help customers achieve more intelligent and profitable energy management.

The floating system solution was powered by three key advantages. It is flexible in layout, allowing for a variable system layout that increases the installed capacity per unit area and improves utilization efficiency, resulting in greater electricity generation benefits.

The system can be adjusted based on the application scenario at the project site, ensuring efficient and reliable operation.